



GAT MONTHLY MEMBERSHIP PROGRESS REPORT

Results as of: 5/31/2024

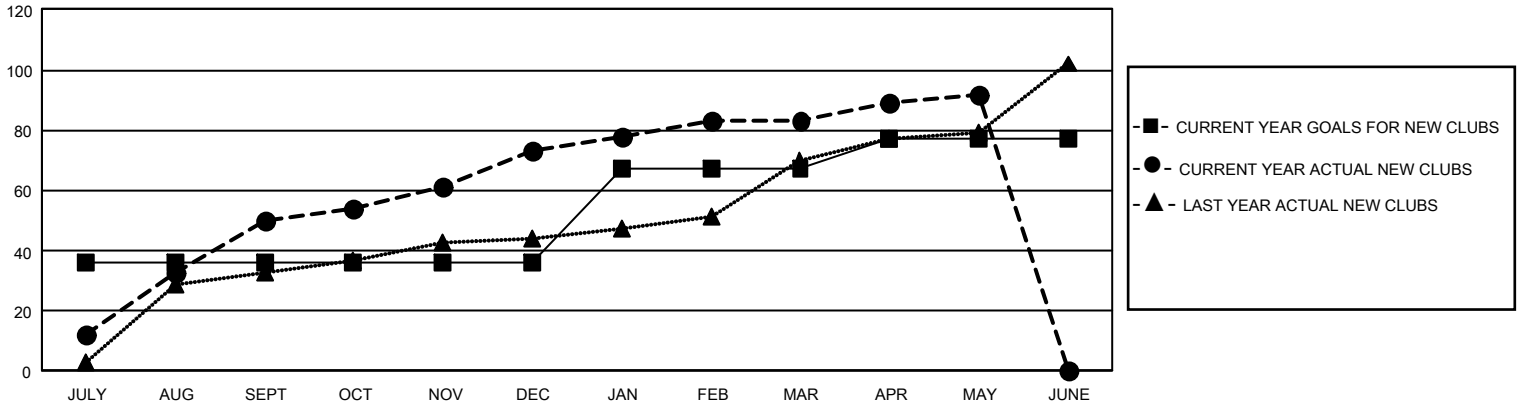
GMT Constitutional Area 6 - I, Group D

REPORT DOES NOT INCLUDE CLUBS IN UNDISTRICTED AREAS.

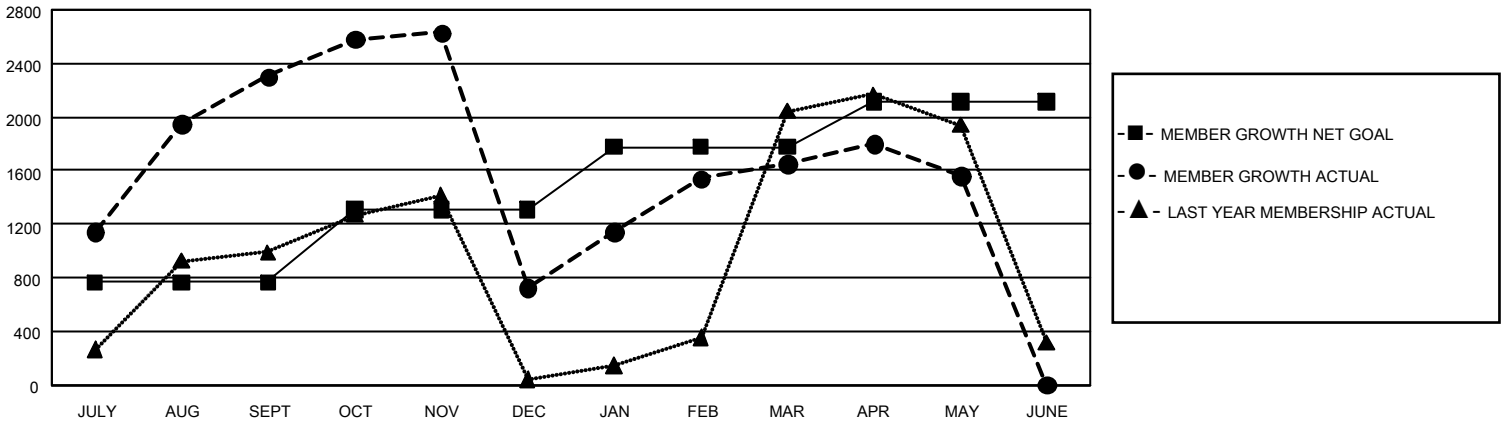
Clubs			
RESULTS FOR 2023-2024			
QUARTER	NEW CLUB GOAL	NEW CLUBS	DROPPED CLUBS
JULY/AUG/SEPT	108	50	19
OCT/NOV/DEC	0	23	54
JAN/FEB/MAR	93	10	8
APR/MAY/JUNE	30	9	6

Members			
RESULTS FOR 2023-2024			
QUARTER	MEMBER GROWTH NET GOAL	MEMBER GROWTH ACTUAL	DROPPED MEMBERS ACTUAL (including transfers)
JULY/AUG/SEPT	765	3,877	1,292
OCT/NOV/DEC	545	2,074	3,285
JAN/FEB/MAR	465	1,529	370
APR/MAY/JUNE	340	750	742

GOALS AND ACTUAL NEW CLUBS CUMULATIVE



GOALS AND ACTUAL MEMBERS CUMULATIVE



DROPPED CLUBS: 87	758 CLUBS OF 1,110 ADDED 1 OR MORE NEW MEMBERS	<u>GENDER DISTRIBUTION</u>	
<u>DROPPED MEMBERS</u>		MALE	28,232 (75.10%)
DECEASED	96	FEMALE	9,351 (24.87%)
CLUB CANCELLED	1,566	NON BINARY	1 (0.00%)
OTHER	4,024	PREFER NOT TO ANSWER	9 (0.02%)
TOTAL	5,686	TOTAL FAMILY UNIT MEMBERS	14,229
	CLICK HERE FOR CUMULATIVE MEMBERSHIP DATA	FAMILY MEMBERS PAYING HALF DUES	8,291